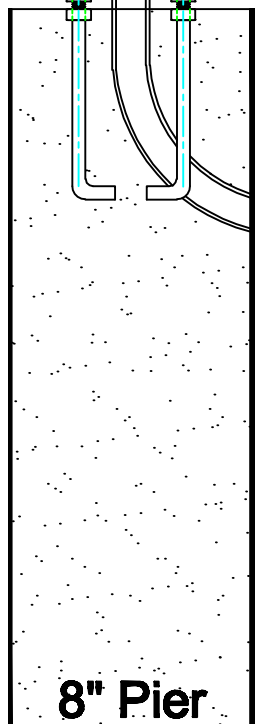


6"x6" Light Housing

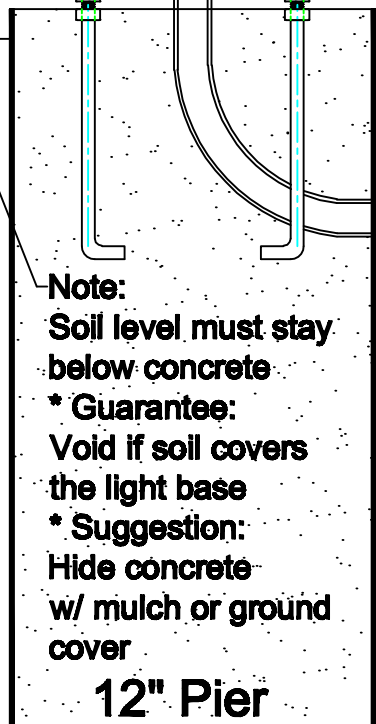
Bollard light

Obelisk light

Set Screws



8" Pier



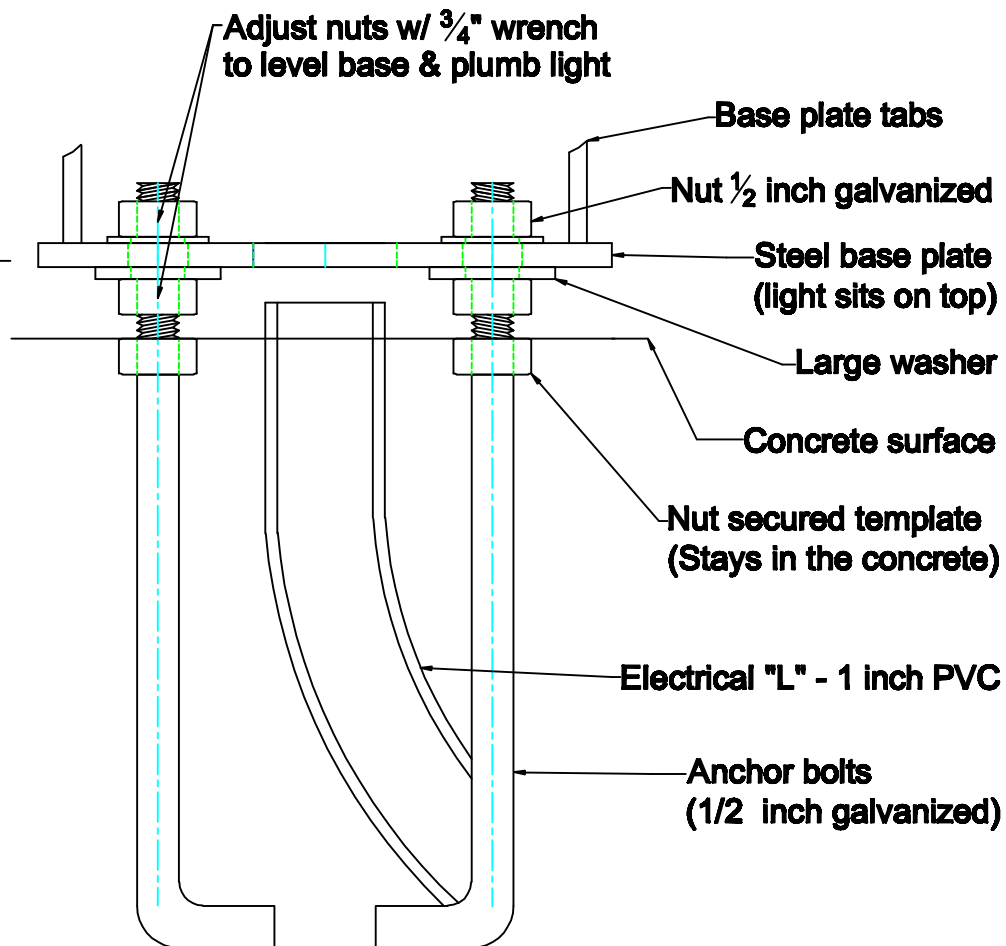
Note:  
Soil level must stay below concrete  
\* Guarantee:  
Void if soil covers the light base  
\* Suggestion:  
Hide concrete w/ mulch or ground cover

12" Pier

**Piers for Bollards & Obelisks**  
Base Plates shown w/ Anchor Bolts & Conduit  
(Base Plates will be shipped w/ lights)

**Attraction Lights 970-316-0019**

Lyle Braund - [lyle@attractionlights.com](mailto:lyle@attractionlights.com)



Adjust nuts w/ 3/4" wrench to level base & plumb light

Base plate tabs

Nut 1/2 inch galvanized

Steel base plate (light sits on top)

Large washer

Concrete surface

Nut secured template (Stays in the concrete)

Electrical "L" - 1 inch PVC

Anchor bolts (1/2 inch galvanized)